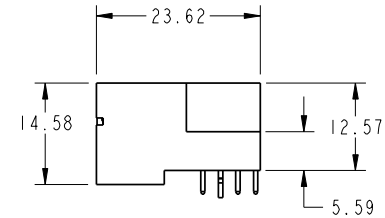
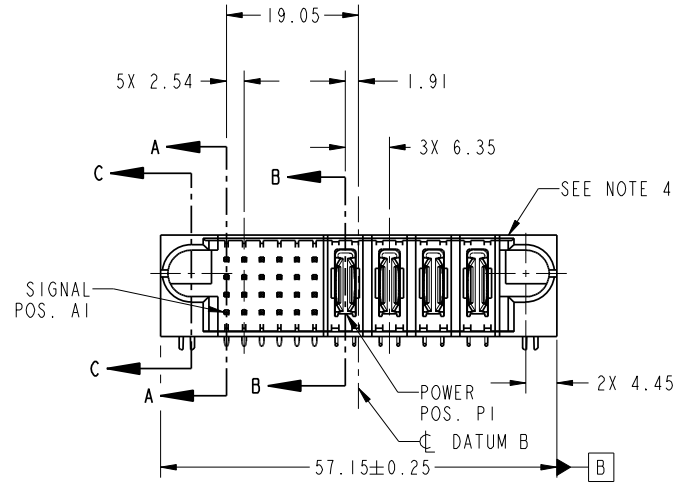
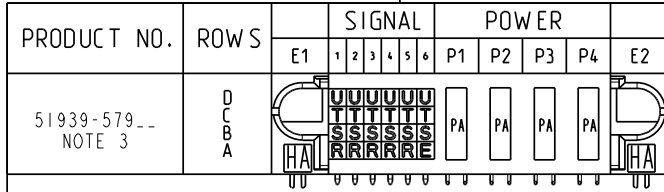


Tous droits strictement réservés. Reproduction ou communication a des tiers interdite sous quelque forme que ce soit sans autorisation écrite du propriétaire. Propriété de c FCI. Droits de reproduction FCI.

All rights strictly reserved. Reproduction or issue to third parties in any form whatever is not permitted without written authority from the proprietor. Property of FCI. Copyright FCI.



CODE	DIM "M" MATING LENGTH	CONTACT TYPE
U	[6.86]	SIGNAL
T	[6.86]	SIGNAL
S	[6.86]	SIGNAL
R	[6.86]	SIGNAL
PA	[N/A]	POWER
HA	[N/A]	HOLD-DOWN
E	[5.59]	SIGNAL

mat'l code				SEE NOTE		tolerances unless otherwise specified		CUSTOMER	
lir	ecn no.	dr	date	linear	0.X ±0.5	projection	COPY		
A	DG11-0041	HZ	02/26/11	angles	0.XX ±0.25		title		
					0.XXX ±0.1		24S + 4P		
				dr	0° +2°	scale	RIGHT ANGLE SOLDER HEADER		
				enr		1:1	product family		
				chr	Helen Zhang 02/26/11		PwrBlade		
				appd	Anson Liu 02/26/11		code		
					PM Zheng 02/26/11		213		
					Joseph Hsia 02/26/11		sheet		
sheet index	revision sheet	A	A	A	A		1 of 4		
		1	2	3	4				

FCI www.fciconnect.com

product family PwrBlade code 213

size dwg no 51939-579 sheet 1 of 4

scale 1:1

cage code 22526

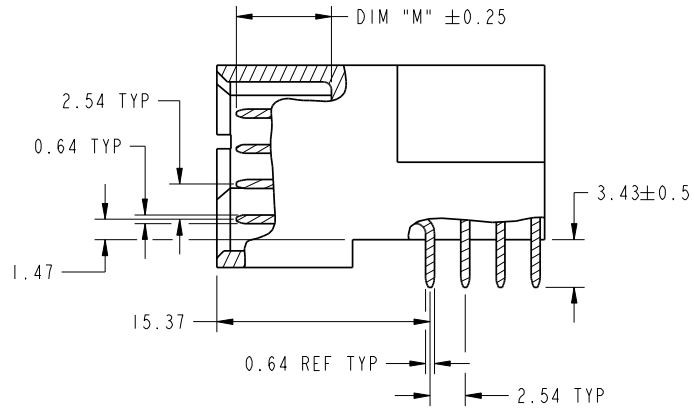
Pro/E

Tous droits strictement réservés. Reproduction ou communication a des tiers interdite sous quelque forme que ce soit sans autorisation écrite du propriétaire. Propriété de c FCI. Droits de reproduction FCI.

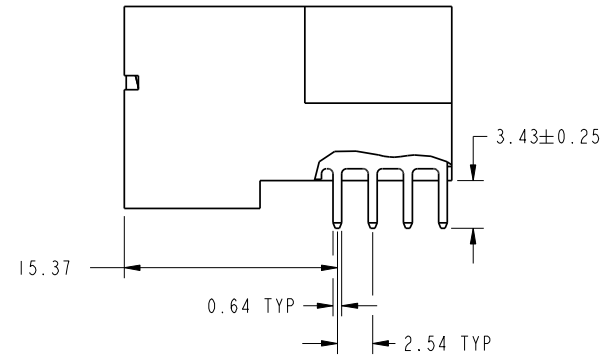
All rights strictly reserved. Reproduction or issue to third parties in any form whatever is not permitted without written authority from the proprietor. Property of FCI. Copyright FCI.



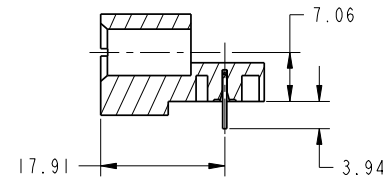
PRODUCT NUMBER
51939-579__
NOTE: 3



BROKEN-OUT SECTION A-A
SCALE 2:1



BROKEN-OUT SECTION B-B
SCALE 2:1



SECTION C-C

mat'l code				SEE NOTE	tolerances unless otherwise specified	CUSTOMER	FCI	
lir	ecr no.	dr	date	linear	0.X ±0.5	COPY	www.fciconnect.com	
A					0.XX ±0.25	projection	title 24S + 4P	
				angles	0.XXX ±0.1		RIGHT ANGLE SOLDER HEADER	
				dr	0° ±2°	MM	product family	PwrBlade
				enr	Helen Zhang 02/26/11	scale	size	code
				chr	Anson Liu 02/26/11	1:1	dwg no	213
				appd	PM Zheng 02/26/11		A	51939-579
					Joseph Hsia 02/26/11			sheet
sheet index	revision sheet							2 of 4

cage code 22526

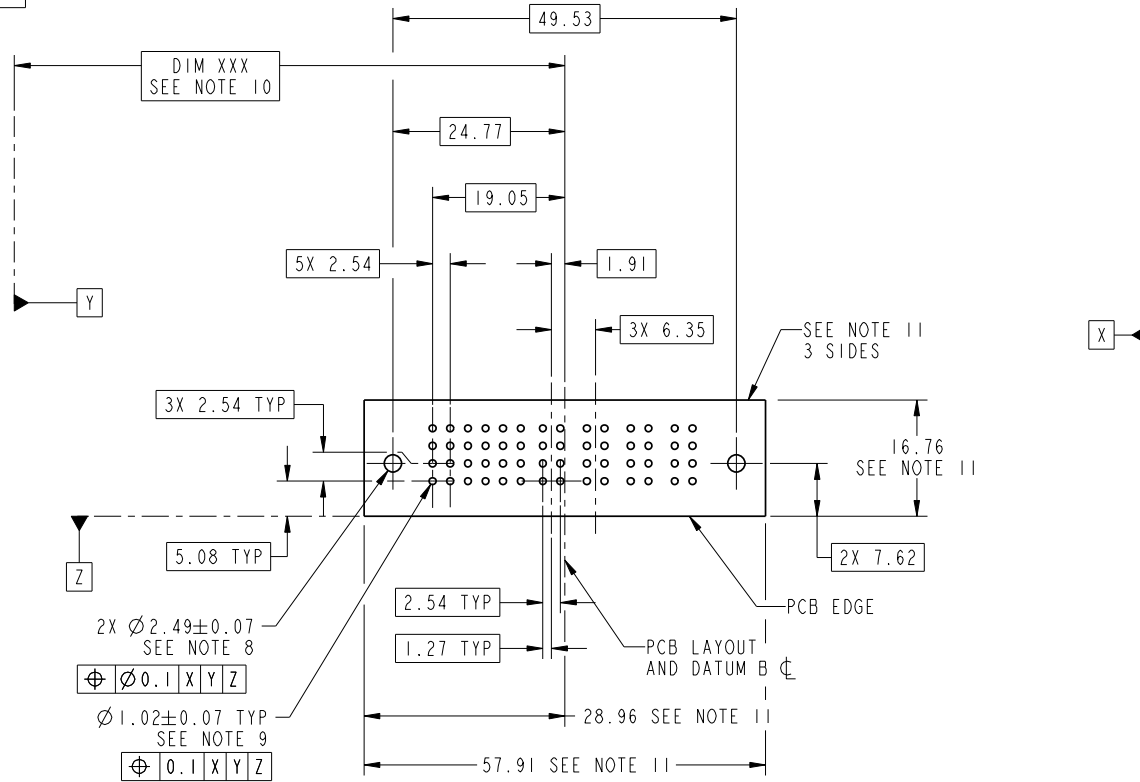
Pro/E

Tous droits strictement réservés. Reproduction ou communication a des tiers interdite sous quelque forme que ce soit sans autorisation écrite du propriétaire. Propriété de c FCI. Droits de reproduction FCI.



All rights strictly reserved. Reproduction or issue to third parties in any form whatever is not permitted without written authority from the proprietor. Property of FCI. Copyright FCI.

PRODUCT NUMBER
51939-579-
NOTE: 3



RECOMMENDED PCB LAYOUT

mat'l code				SEE NOTE	tolerances unless otherwise specified		CUSTOMER		FCI		www.fciconnect.com	
lfr	ecn no.	dr	date	linear	0.X ±0.5		COPY		projection		title	
A					0.XX ±0.25		MM		24S + 4P		RIGHT ANGLE SOLDER HEADER	
				angles	0.XXX ±0.1		MM		product family		PwrBlade	
				dr	0° ±2°		MM		size		code	
				enrg	0° ±2°		MM		dwg no		213	
				chr	0° ±2°		MM		A		sheet	
				appd	0° ±2°		MM		51939-579		3 of 4	
sheet index	revision sheet											

cage code 22526

Pro/E

Tous droits strictement réservés. Reproduction ou communication a des tiers interdite sous quelque forme que ce soit sans autorisation écrite du propriétaire. Propriété de c FCI. Droits de reproduction FCI.



All rights strictly reserved. Reproduction or issue to third parties in any form whatever is not permitted without written authority from the proprietor. Property of FCI. Copyright FCI.

PRODUCT NUMBER
51939-579_
NOTE: 3

NOTES:

1. DIMENSIONS AND TOLERANCES ARE IN ACCORDANCE WITH ASME Y14.5M, 1994 UNLESS OTHERWISE SPECIFIED.

CONNECTOR NOTES:

- 2. HOUSING MATERIAL: UL 94 V-0 GLASS FILLED HIGH-TEMP THERMOPLASTIC
POWER CONTACT MATERIAL: COPPER ALLOY
SIGNAL PIN MATERIAL: COPPER ALLOY
- 3. SEE ITEM 1 & 2 IN PRINT 10064183 FOR PLATING SPEC OF 51939-576 AND 51939-576LF RESPECTIVELY.
- 4. MANUFACTURER'S NAME, P/N, AND DATE CODE TO APPEAR ON THIS SURFACE.
- 5. PRODUCT SPECIFICATION GS-12-149.
APPLICATION SPECIFICATION BUS-20-067.
- 6. PACKAGED IN TRAYS.

PCB NOTES:

- 7. ALL HOLE DIAMETERS ARE FINISHED HOLE SIZE.
- 8. MOUNTING HOLES, WHERE APPLICABLE, ARE UNPLATED.
- 9. $\varnothing 1.151 \pm 0.025$ DRILLED HOLES PLATED WITH 0.008 MIN SnPb OR Sn OVER 0.03 TO 0.08 Cu PLATING TO ACHIEVE $\varnothing 1.02 \pm 0.07$ HOLE.
- 10. "DIM XXX" TO BE DETERMINED BY THE CUSTOMER.
- 11. CONNECTOR KEEP-OUT ZONE.

mat'l code				SEE NOTE	tolerances unless otherwise specified	CUSTOMER	FCI	
lir	ecn no.	dr	date	linear	0.X ± 0.5	COPY	www.fciconnect.com	
A				linear	0.XX ± 0.25	projection	title 24S + 4P	
				angles	0.XXX ± 0.1		RIGHT ANGLE SOLDER HEADER	
				dr	0° + 2°	MM	product family	PwrBlade
				enr	Helen Zhang 02/26/11	scale	size	code
				chr	Anson Liu 02/26/11	1:1	dwg no	213
				appd	PM Zheng 02/26/11	A	51939-579	sheet
					Joseph Hsia 02/26/11			4 of 4
sheet index	revision sheet							

cage code 22526

Pro/E