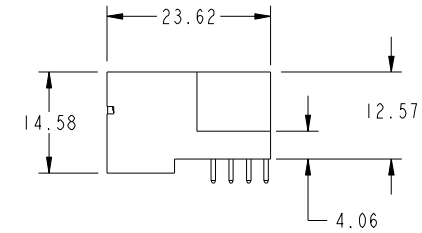
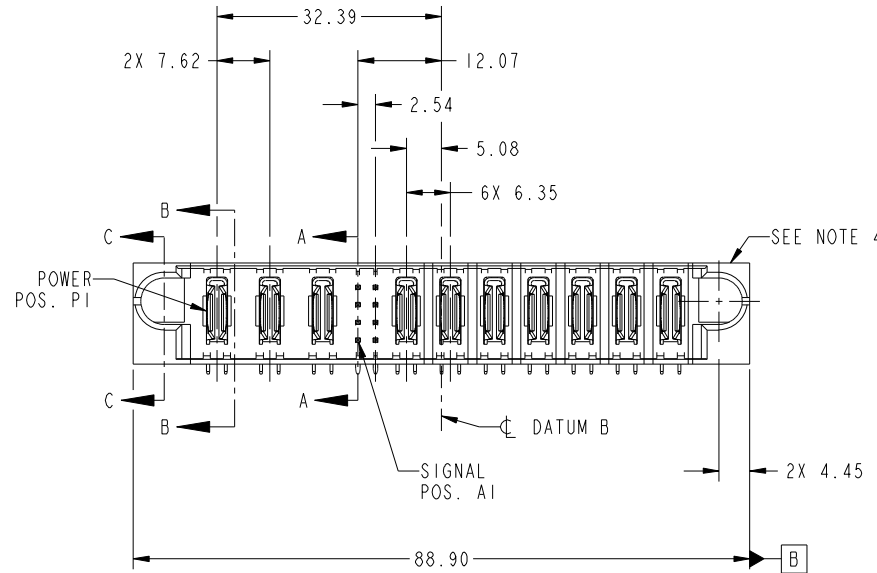


Tous droits strictement reserves. Reproduction ou communication a des tiers interdite sous quelque forme que ce soit sans autorisation écrite du propriétaire. Propriete de c FCI. Droits de reproduction FCI.



All rights strictly reserved. Reproduction or issue to third parties in any form whatever is not permitted without written authority from the proprietor. Property of FCI. Copyright FCI.

PRODUCT NO.	ROWS	POWER				SIG	POWER						E2	
		E1	P1	P2	P3	1 2	P4	P5	P6	P7	P8	P9		P10
51939-511... NOTE 3	D C B A													



CODE	DIM "M" MATING LENGTH	CONTACT TYPE
U	[6.86]	SIGNAL
T	[6.86]	SIGNAL
S	[6.86]	SIGNAL
R	[6.86]	SIGNAL
PA	[N/A]	POWER

mat'l code				SEE NOTE	tolerances unless otherwise specified		CUSTOMER			
ltr	ecn no.	dr	date	linear	0.X ± 0.5	projection	COPY	www.fciconnect.com		
A	DG10-0166	WD	05/07/10	angles	0.XX ± 0.25			title		
					0.XXX ± 0.1			3ACP + 8S + 7P RIGHT ANGLE SOLDER HEADER		
					0° ± 2°	MIM	scale	product family		
				dr	Warren Du 03/09/10			PwrBlade		code
				enr	Warren Du 03/09/10			size	dwg no	213
				chr	PM ZHENG 03/09/10			A	51939-511	sheet
				appd	JOSEPH HSIA 03/09/10	1:1		1 of 4		
sheet index	revision sheet	A	A	A	A					
		1	2	3	4					

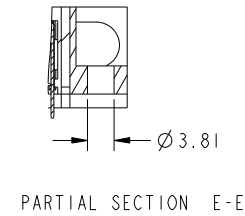
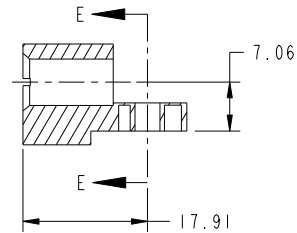
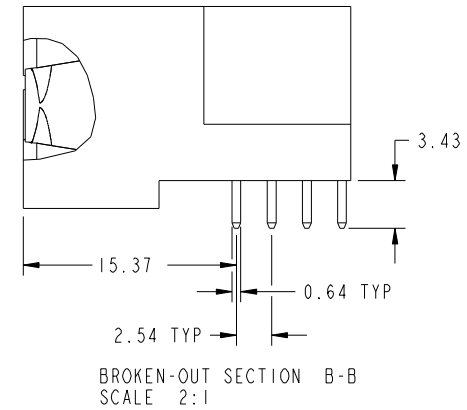
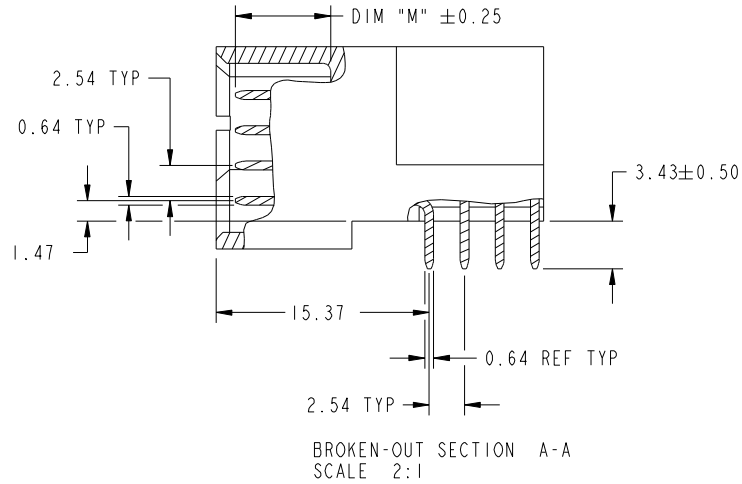
cage code 22526

Tous droits strictement reserves. Reproduction ou communication a des tiers interdite sous quelque forme que ce soit sans autorisation écrite du propriétaire. Propriete de c FCI. Droits de reproduction FCI.

All rights strictly reserved. Reproduction or issue to third parties in any form whatever is not permitted without written authority from the proprietor. Property of FCI. Copyright FCI.



PRODUCT NUMBER
51939-511--
NOTE: 3



mat'l code				SEE NOTE	tolerances unless otherwise specified		CUSTOMER		FCI	
ltr	ecr no.	dr	date	linear	0.X ±0.5	COPY		www.fciconnect.com		
A				linear	0.XX ±0.25	projection		title		
				angles	0.XXX ±0.1			3ACP + 8S + 7P RIGHT ANGLE SOLDER HEADER		
				dr	0° ±2°			product family		code
				enr	Warren Du 03/09/10	scale		PwrBlade		213
				chr	Warren Du 03/09/10	1:1		size		sheet
				appd	PM ZHENG 03/09/10			dwg no		2 of 4
					JOSEPH HSIA 03/09/10			51939-511		
sheet index	revision sheet									

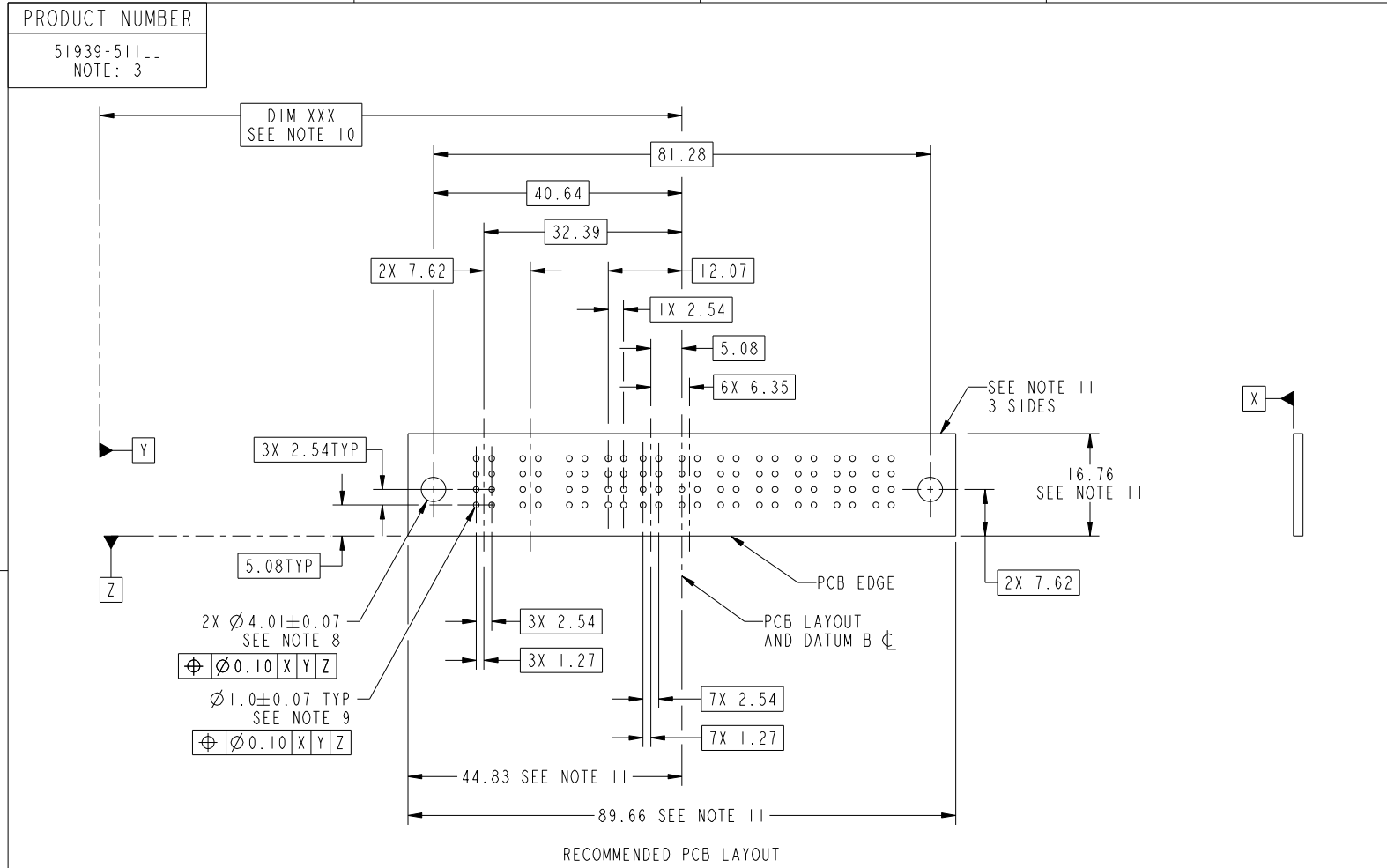
cage code 22526

Pro/E

Tous droits strictement reserves. Reproduction ou communication a des tiers interdite sous quelque forme que ce soit sans autorisation écrite du propriétaire. Propriete de c FCI. Droits de reproduction FCI.



All rights strictly reserved. Reproduction or issue to third parties in any form whatever is not permitted without written authority from the proprietor. Property of FCI. Copyright FCI.



mat'l code		SEE NOTE		tolerances unless otherwise specified		CUSTOMER		FCI	
ltr	ecn no.	dr	date	linear	0.X ±0.5	COPY		www.fciconnect.com	
A					0.XX ±0.25	projection		title	
				angles	0.XXX ±0.1			3ACP + 8S + 7P RIGHT ANGLE SOLDER HEADER	
				dr	0° ±2°			product family PwrBlade code 213	
				enr	Warren Du 03/09/10	scale		size dwg no 213	
				chr	Warren Du 03/09/10	1:1		sheet 3 of 4	
				appd	PM ZHENG 03/09/10			A 51939-511	
					JOSEPH HSIA 03/09/10				
sheet index	revision sheet								

RECOMMENDED PCB LAYOUT

cage code 22526

Tous droits strictement reserves. Reproduction ou communication a des tiers interdite sous quelque forme que ce soit sans autorisation écrite du propriétaire. Propriete de c FCI. Droits de reproduction FCI.



All rights strictly reserved. Reproduction or issue to third parties in any form whatever is not permitted without written authority from the proprietor. Property of FCI. Copyright FCI.

PRODUCT NUMBER
51939-511--
NOTE: 3

NOTES:

1. DIMENSIONS AND TOLERANCES ARE IN ACCORDANCE WITH ASME Y14.5M, 1994 UNLESS OTHERWISE SPECIFIED.

CONNECTOR NOTES:

- 2. HOUSING MATERIAL: UL 94 V-0 GLASS FILLED HIGH-TEMP THERMOPLASTIC
POWER CONTACT MATERIAL: COPPER ALLOY
SIGNAL PIN MATERIAL: COPPER ALLOY
- 3. SEE ITEM 1 & 2 IN PRINT 10064183 FOR PLATING SPEC OF 51939-511 AND 51939-511LF RESPECTIVELY.
- 4. MANUFACTURER'S NAME, DATE CODE AND OPTIONAL P/N TO APPEAR ON THIS SURFACE. THE P/N CAN BE OMITTED IF THERE IS NOT ENOUGH SPACE ON THIS SURFACE.
- 5. PRODUCT SPECIFICATION GS-12-149.
APPLICATION SPECIFICATION BUS-20-067.
- 6. PACKAGED IN TRAYS.

PCB NOTES:

- 7. ALL HOLE DIAMETERS ARE FINISHED HOLE SIZE.
- 8. MOUNTING HOLES, WHERE APPLICABLE, ARE UNPLATED.
- 9. $\varnothing 1.151 \pm 0.025$ DRILLED HOLES PLATED WITH
0.008 MIN SnPb OR Sn OVER 0.03
TO 0.08 Cu PLATING TO ACHIEVE
 $\varnothing 1.02 \pm 0.07$ HOLE.
- 10. "DIM XXX" TO BE DETERMINED BY THE CUSTOMER.
- 11. CONNECTOR KEEP-OUT ZONE.

mat'l code		SEE NOTE		tolerances unless otherwise specified		CUSTOMER		FCI		www.fciconnect.com	
ltr	ecn no.	dr	date	linear	0.X ± 0.5	COPY				title	
A					0.XX ± 0.25	projection				3ACP + 8S + 7P	
				angles	0.XXX ± 0.1					RIGHT ANGLE SOLDER HEADER	
				dr	Warren Du 03/09/10	MIM		product family		PwrBlade	code
				enrg	Warren Du 03/09/10			size		dwg no	213
				chr	PM ZHENG 03/09/10	scale		A		51939-511	sheet
				appd	JOSEPH HSIA 03/09/10	1:1				4 of 4	
sheet index		revision sheet									

cage code 22526

Pro/E