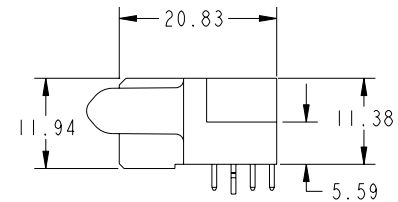
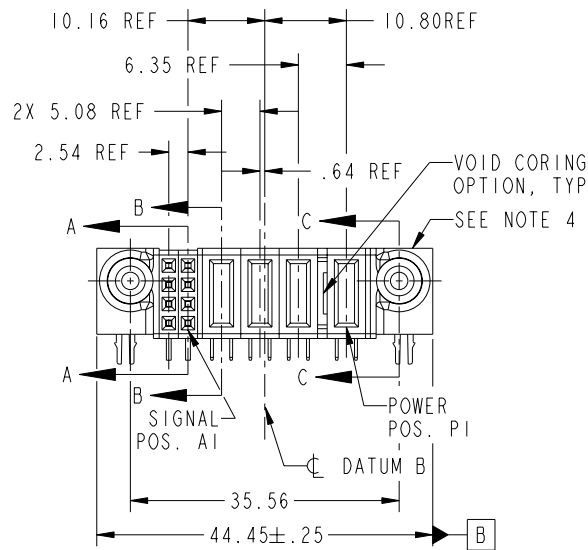
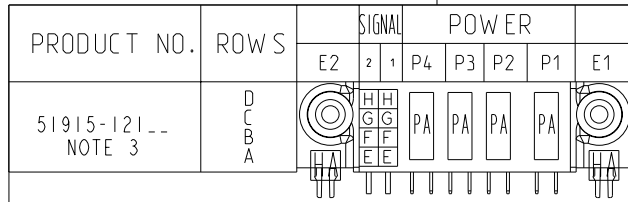


Tous droits strictement réservés. Reproduction ou communication o des tiers interdite sous quelque forme que ce soit sans autorisation écrite du propriétaire. Propriete de c FCI. Droits de reproduction FCI.



All rights strictly reserved. Reproduction or issue to third parties in any form whatever is not permitted without written authority from the proprietor. Property of FCI. Copyright FCI.



CODE	DIM "M" MATING LENGTH	CONTACT TYPE
PA	[1.07]	POWER
H	[N/A]	SIGNAL
G	[N/A]	SIGNAL
F	[N/A]	SIGNAL
E	[N/A]	SIGNAL
HA	[N/A]	HOLD-DOWN

mat'l code SEE NOTE 2				tolerances unless otherwise specified		CUSTOMER		FCI www.fciconnect.com	
ltr	ecr no.	dr	date	linear	0.X ± 0.3	COPY		title	
A	DG06-0415	JULIA	10/10/06		0.XX ± 0.13	projection		4P + 8S RIGHT ANGLE SOLDER RECEPTACLE	
				angles	0.XXX ± 0.051	MM		product family	
				dr	0° ± 2°	scale		PwrBlade	
				enr	JULIA WANG 10/10/06	1:1		code	
				chr	RYAN YUAN 10/10/06			213	
				appd	BEER FU 10/10/06			size	
					JOSEPH HSIA 10/10/06			dwg no	
sheet index	revision sheet	A 1	A 2	A 3	A 4			A 51915-121	
								sheet 1 of 4	

Pro/E

cage code 22526

PDM: Rev:A

STATUS: Released

Printed: Dec 20, 2010

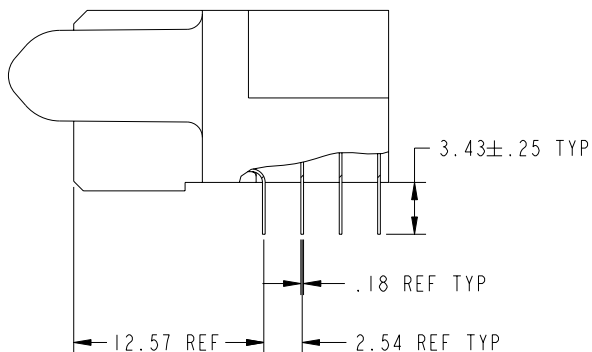
Tous droits strictement reserves. Reproduction ou communication a des tiers interdite sous quelque forme que ce soit sans autorisation ecrite du proprietaire. Propriete de c FCI. Droits de reproduction FCI.

All rights strictly reserved. Reproduction or issue to third parties in any form whatever is not permitted without written authority from the proprietor. Property of FCI. Copyright FCI.

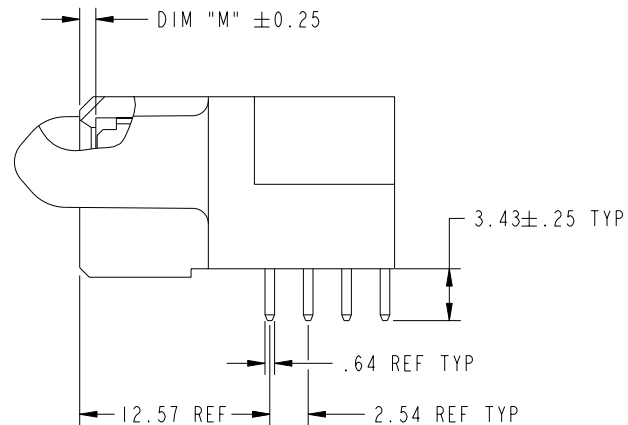


PRODUCT NUMBER

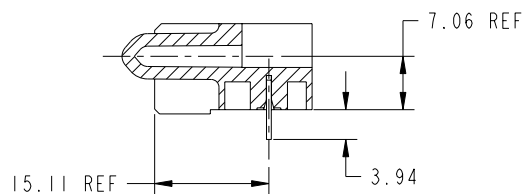
51915-121\_\_  
NOTE 3



BROKEN-OUT SECTION A-A  
SCALE 2:1



BROKEN-OUT SECTION B-B  
SCALE 2:1



SECTION C-C

mat'l code		SEE NOTE 2		tolerances unless otherwise specified		CUSTOMER		FCI		www.fciconnect.com			
ltr	ecn no.	dr	date	linear	0.X ± 0.3	COPY				title			
A				linear	0.XX ± 0.13	projection				4P + 8S		RIGHT ANGLE SOLDER RECEPTACLE	
				angles	0.XXX ± 0.051					product family		PwrBlade code	
				dr	JULIA WANG	10/10/06	MM		size		213		
				enr	RYAN YUAN	10/10/06	scale		dwg no		sheet		
				chr	BEER FU	10/10/06	1:1		A		51915-121		
				appd	JOSEPH HSIA	10/10/06					2 of 4		
sheet index		revision sheet											

cage code 22526

Pro/E

PDM: Rev:A

STATUS: Released

Printed: Dec 20, 2010

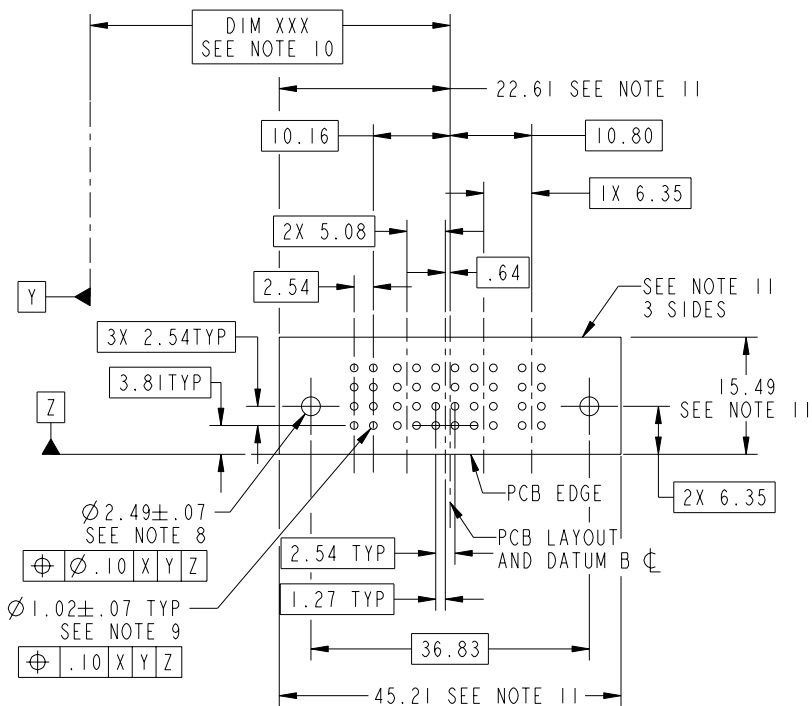
Tous droits strictement reserves. Reproduction ou communication a des tiers interdite sous quelque forme que ce soit sans autorisation ecrite du propriétaire. Propriete de c FCI. Droits de reproduction FCI.



All rights strictly reserved. Reproduction or issue to third parties in any form whatever is not permitted without written authority from the proprietor. Property of FCI. Copyright FCI.

PRODUCT NUMBER

51915-121--  
NOTE 3



mat'l code				SEE NOTE		tolerances unless otherwise specified		CUSTOMER		FCI www.fciconnect.com	
ltr	ecn no.	dr	date	linear	0.X ± 0.3		COPY		title 4P + 8S RIGHT ANGLE SOLDER RECEPTACLE		
A					0.XX ± 0.13		projection				
					angles	0.XXX ± 0.051					
				0° ± 2°							
				dr	JULIA WANG	10/10/06	MM		product family		code
				enr	RYAN YUAN	10/10/06	← MM →		PwrBlade		213
				chr	BEER FU	10/10/06	scale		size		sheet
				appd	JOSEPH HSIA	10/10/06	1:1		A		3 of 4
sheet index		revision sheet									



www.fciconnect.com

title  
4P + 8S  
RIGHT ANGLE SOLDER RECEPTACLE

product family PwrBlade code

size

dwg no 51915-121

sheet 3 of 4

cage code 22526

Pro/E

PDM: Rev:A

STATUS: Released

Printed: Dec 20, 2010

Tous droits strictement reserves. Reproduction ou communication o des tiers interdite sous quelque forme que ce soit sans autorisation ecrite du proprietaire. Propriete de c FCI. Droits de reproduction FCI.



All rights strictly reserved. Reproduction or issue to third parties in any form whatever is not permitted without written authority from the proprietor. Property of FCI. Copyright FCI.

PRODUCT NUMBER

51915-121\_\_  
NOTE 3

NOTES:

1. DIMENSIONS AND TOLERANCES ARE IN ACCORDANCE WITH ASME Y14.5M, 1994 UNLESS OTHERWISE SPECIFIED.

CONNECTOR NOTES:

- 2. HOUSING MATERIAL: UL 94 V-0 GLASS FILLED  
HIGH-TEMP THERMOPLASTIC  
POWER CONTACT MATERIAL: COPPER ALLOY  
SIGNAL PIN MATERIAL: COPPER ALLOY
- 3. PLATING:  
51915-121,51915-121LF PLATING SPEC. WAS SHOWN IN THE PRINT OF 10064183.
- 4. MANUFACTURER'S NAME, P/N, AND DATE CODE TO APPEAR ON THIS SURFACE.
- 5. PRODUCT SPECIFICATION GS-12-149.  
APPLICATION SPECIFICATION BUS-20-067.
- 6. PACKAGED IN TRAYS.

PCB NOTES:

- 7. ALL HOLE DIAMETERS ARE FINISHED HOLE SIZE.
- 8. MOUNTING HOLES, WHERE APPLICABLE, ARE UNPLATED.
- 9.  $\varnothing 1.151 \pm 0.025$  DRILLED HOLES PLATED WITH  
0.008 MIN SnPb OR Sn OVER 0.03  
TO 0.08 Cu PLATING TO ACHIEVE  
 $\varnothing 1.02 \pm .07$  HOLE.
- 10. "DIM XXX" TO BE DETERMINED BY THE CUSTOMER.
- 11. CONNECTOR KEEP-OUT ZONE.

mat'l code		SEE NOTE 2		tolerances unless otherwise specified		CUSTOMER		FCI		www.fciconnect.com	
ltr	ecn no.	dr	date	linear	0.X ± 0.3	COPY				title	
A					0.XX ± 0.13	projection				4P + 8S	
				angles	0.XXX ± 0.051					RIGHT ANGLE SOLDER RECEPTACLE	
				dr	JULIA WANG	10/10/06	MM		product family		code
				enr	RYAN YUAN	10/10/06	← MM →		PwrBlade		213
				chr	BEER FU	10/10/06	scale		size		sheet
				appd	JOSEPH HSIA	10/10/06	1:1		A		4 of 4
sheet index		revision sheet									



www.fciconnect.com

title  
4P + 8S  
RIGHT ANGLE SOLDER RECEPTACLE

product family  
PwrBlade code  
213

size  
A 51915-121 sheet  
4 of 4

cage code  
22526

Pro/E

PDM: Rev:A

STATUS: Released

Printed: Dec 20, 2010