

CODE	DIM "M" MATING LENGTH	CONTACT TYPE
PC	[2.34]	POWER
PA	[1.07]	POWER
H	[N/A]	SIGNAL
G	[N/A]	SIGNAL
F	[N/A]	SIGNAL
E	[N/A]	SIGNAL
HA	[N/A]	HOLD-DOWN

spec ref	SEE NOTES			dr	De-Ming Lu	2015/08/17	projection 	MM 	size	A4	scale	1:1
tolerance std	TOLERANCES UNLESS OTHERWISE SPECIFIED			eng	De-Ming Lu	2015/08/20			ecn no	-		
SEE NOTES				chr	Fancy Zhang	2015/08/20			rel level	Released		
				appr	Pei-Ming Zheng	2015/08/20			product family	PwrBlade		
surface	linear angular	0.X	±0.50		title 6P + 24S + 6P R/A SOLDER RECEPTACLE	www.fci.com	cat. no.	Product - Customer Drw	rev A			
		0.XX	±0.25									
		0.XXX	±0.10									
	0°	±2°										
				www.fci.com				Product - Customer Drw		sheet 1 of 4		

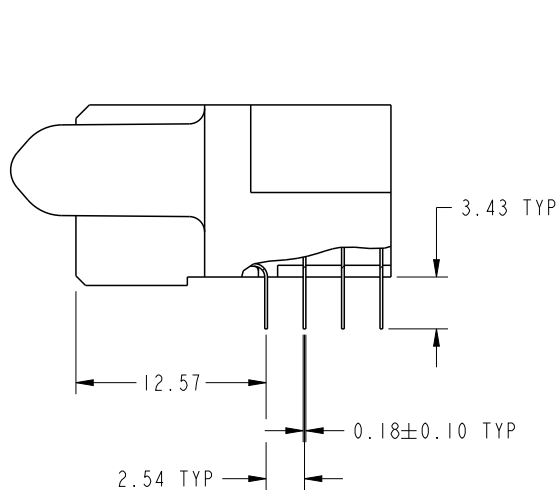


Copyright FCI.

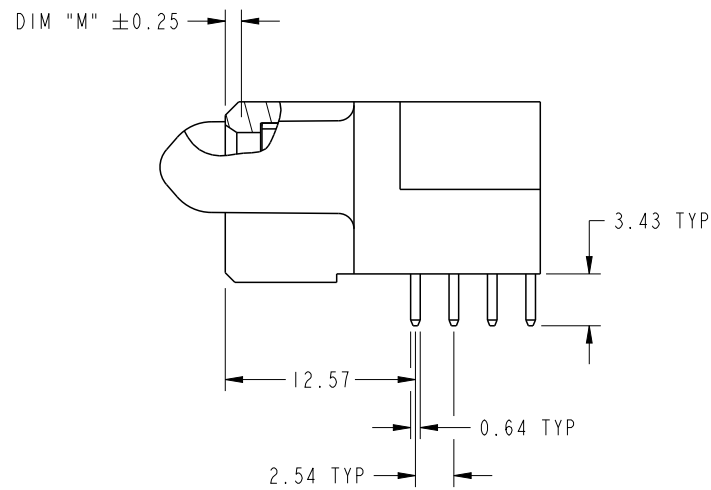
PwrE File - REV C - 2009-06-09

PRODUCT NUMBER

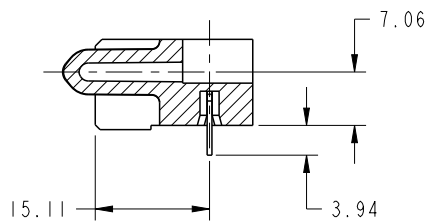
51770-062LF



BROKEN-OUT SECTION A-A  
SCALE 2:1



BROKEN-OUT SECTION B-B  
SCALE 2:1

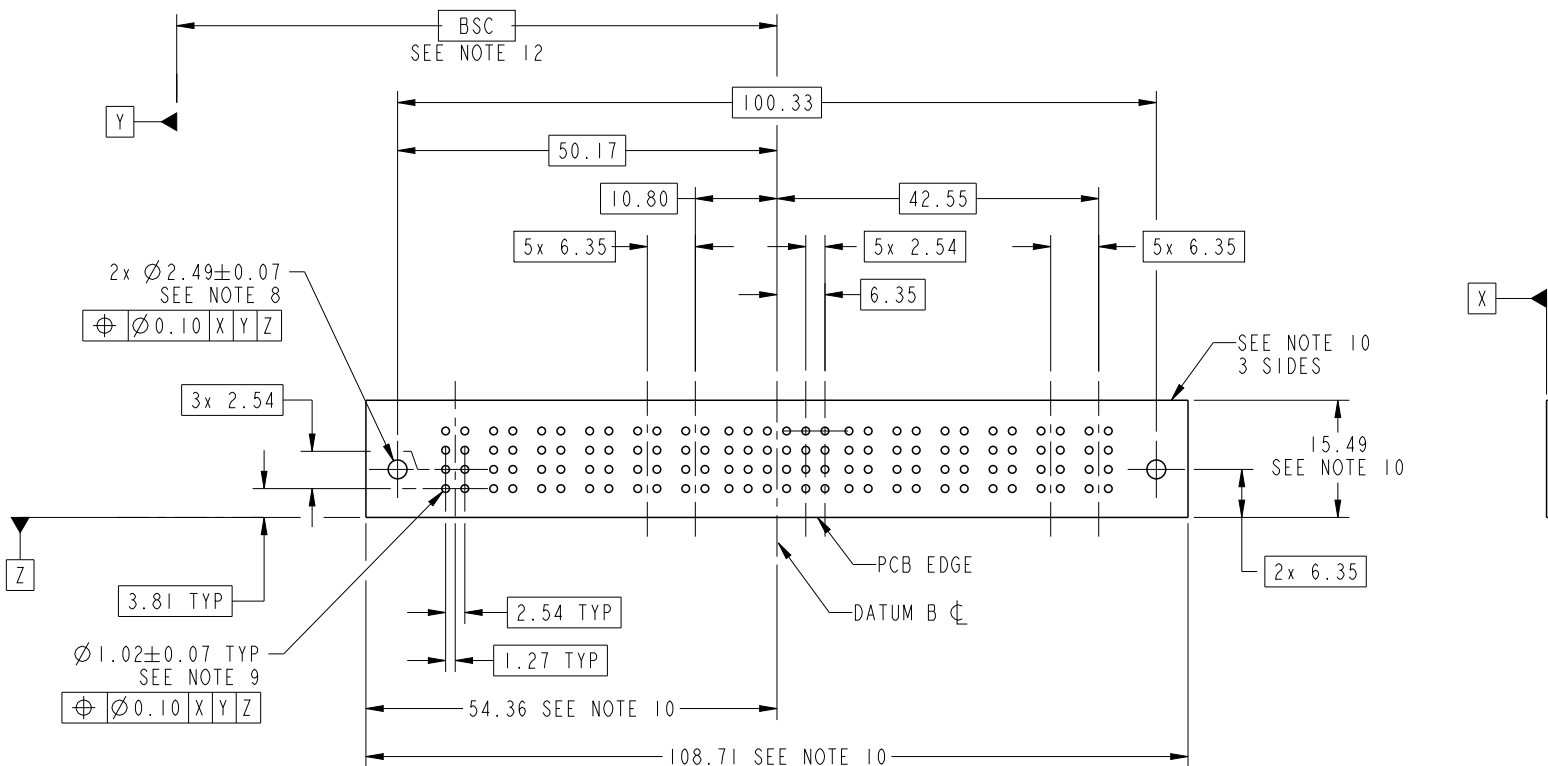


SECTION C-C

dr	De-Ming Lu	2015/08/17	projection 	MM 	size	A4	scale	1:1
eng	De-Ming Lu	2015/08/20			ecn no	-		
chr	Fancy Zhang	2015/08/20			rel level	Released		
appr	Pei-Ming Zheng	2015/08/20	product family	PwrBlade	rev	A		
		title 6P + 24S + 6P R/A SOLDER RECEPTACLE	dwg no 51770-062	cat. no. Product - Customer Drw	sheet 2 of 4			

PRODUCT NUMBER

51770-062LF



RECOMMENDED PCB LAYOUT

dr	De-Ming Lu	2015/08/17	projection 	MM 	size	A4	scale	1:1
eng	De-Ming Lu	2015/08/20			ecn no	-		
chr	Fancy Zhang	2015/08/20			rel level	Released		
appr	Pei-Ming Zheng	2015/08/20	product family	PwrBlade	rev	A		
		title		6P + 24S + 6P		dwg no		51770-062
www.fci.com		cat. no.		Product - Customer Drw		sheet 3 of 4		
		R/A SOLDER RECEPTACLE						

PRODUCT NUMBER

51770-062LF

NOTES:

1. DIMENSIONS AND TOLERANCES ARE IN ACCORDANCE WITH ASME Y14.5M, 1994 UNLESS OTHERWISE SPECIFIED.

CONNECTOR NOTES:

2. HOUSING MATERIAL: UL 94 V-0 GLASS FILLED HIGH-TEMP THERMOPLASTIC  
POWER CONTACT MATERIAL: COPPER ALLOY  
SIGNAL PIN MATERIAL: COPPER ALLOY

3. SEE FCI PLATING SPEC 10064183.

4. MANUFACTURER'S NAME, DATE CODE AND OPTIONAL P/N TO APPEAR ON THIS SURFACE. THE MARK CAN BE OMITTED IF THERE IS NOT ENOUGH SPACE ON THIS SURFACE.

5. PRODUCT SPECIFICATION GS-12-149.  
APPLICATION SPECIFICATION BUS-20-067.

6. PACKAGED IN TRAYS.

PCB NOTES:

7. ALL HOLE DIAMETERS ARE FINISHED HOLE SIZE.

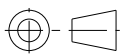
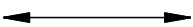

8. MOUNTING HOLES, WHERE APPLICABLE, ARE UNPLATED.

9.  $\varnothing 1.151 \pm 0.025$  DRILLED HOLES PLATED WITH  
0.008 MIN SnPb OR Sn OVER 0.03  
TO 0.08 Cu PLATING TO ACHIEVE  
 $\varnothing 1.02 \pm .07$  HOLE.

10. CONNECTOR KEEP-OUT ZONE.

11. THE VOID CORING IN BETWEEN POWER MODULES, SIGNAL MODULES AND END MODULES ARE OPTIONAL AND THE SHAPE MAY BE DIFFERENT FOR OPTIMIZE THE MOLDING PROCESS. THE VOID CORING WILL NOT EFFECT TO PRODUCT FUNCTION.

12. DATUM AND BASIC DIMENSIONS ARE ESTABLISHED BY CUSTOMER.

dr	De-Ming Lu	2015/08/17	projection 	MM 	size	A4	scale	1:1
eng	De-Ming Lu	2015/08/20			ecn no	-		
chr	Fancy Zhang	2015/08/20			product family	PwrBlade	rel level	Released
appr	Pei-Ming Zheng	2015/08/20			title 6P + 24S + 6P R/A SOLDER RECEPTACLE	dwg no 51770-062	rev A	
www.fci.com		cat. no.	Product - Customer Drw			sheet 4 of 4		